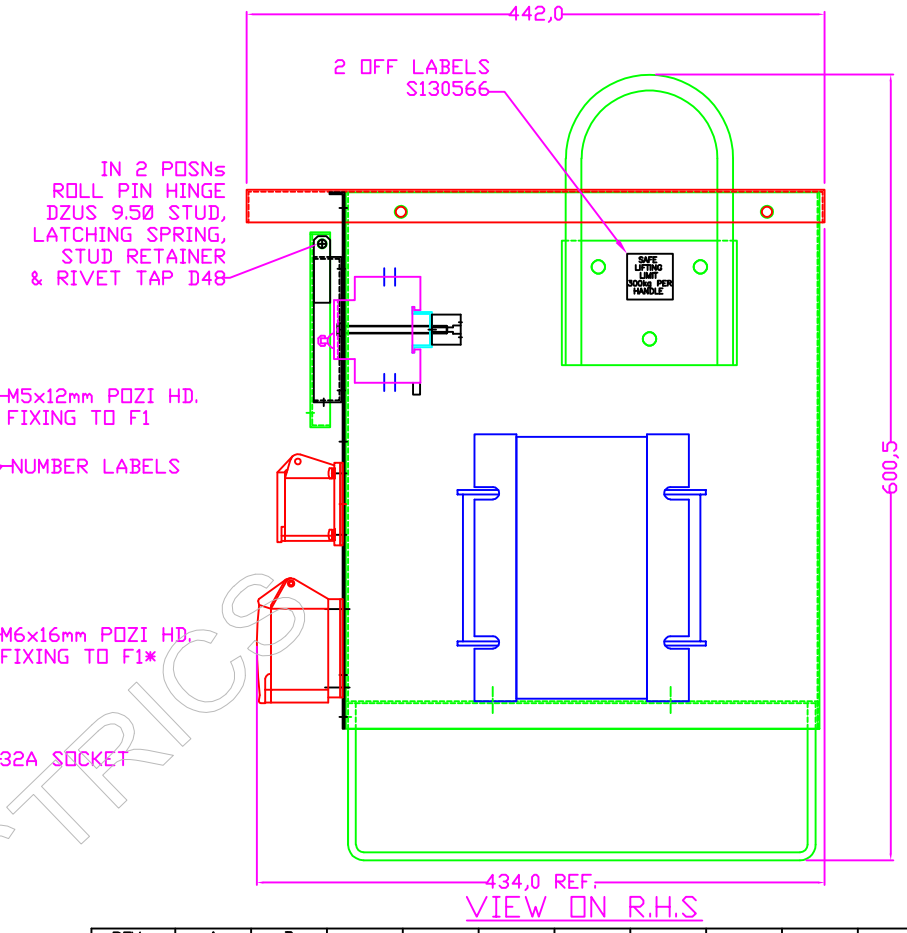
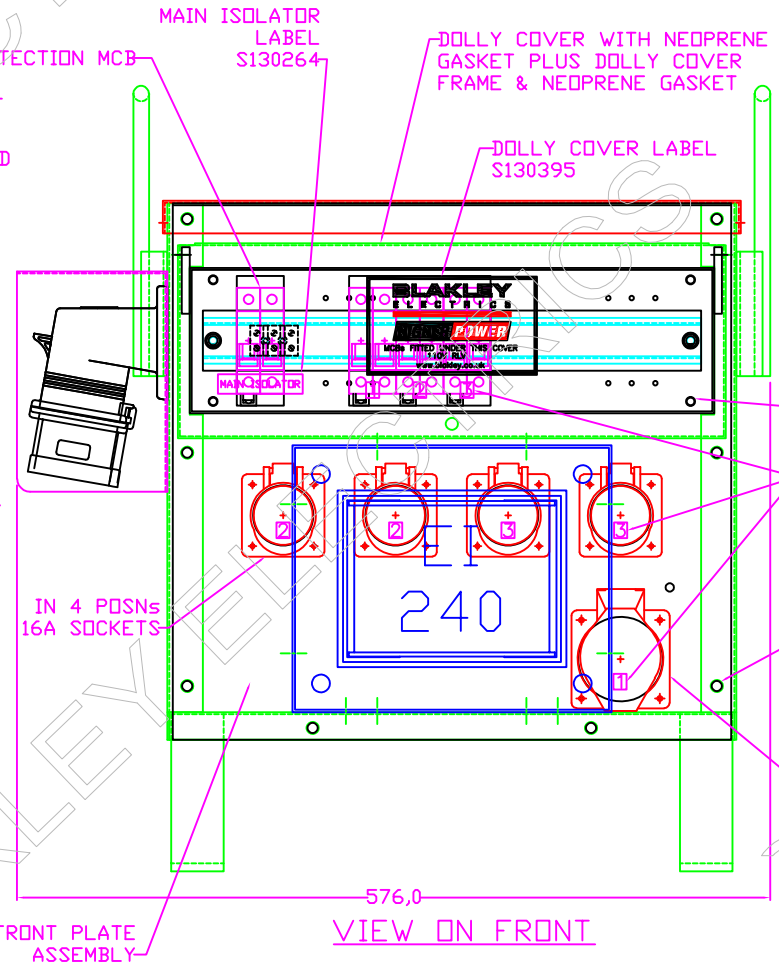
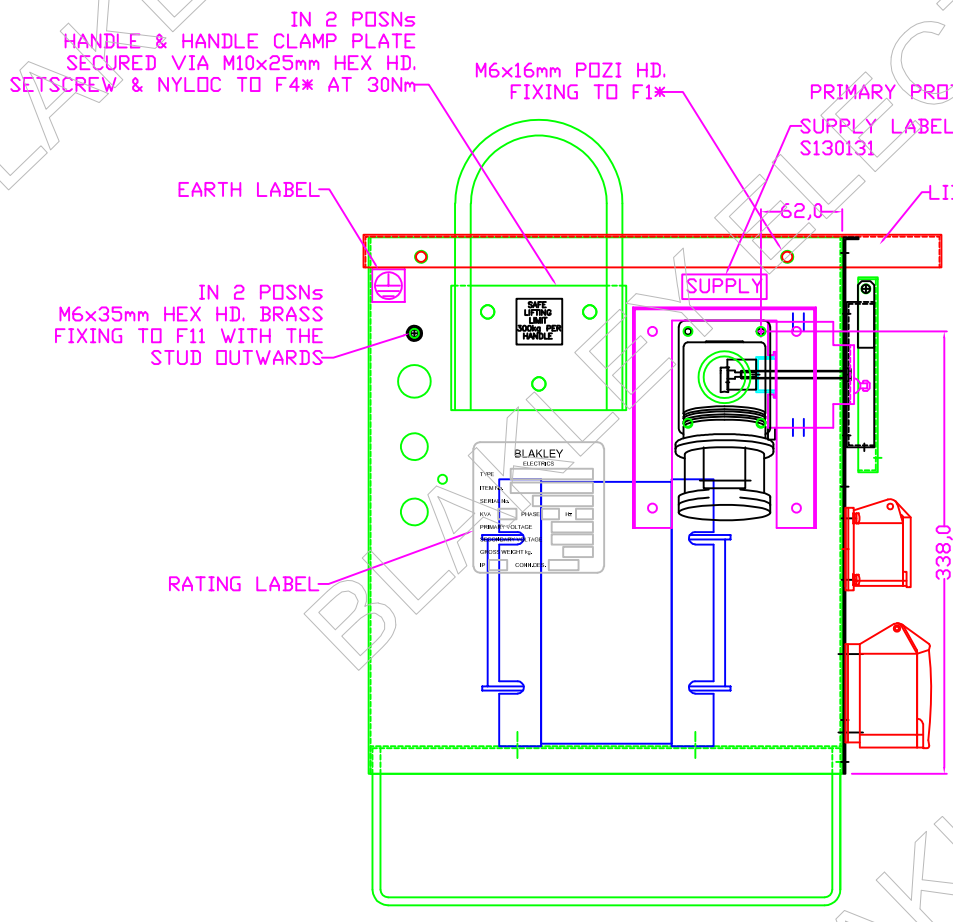
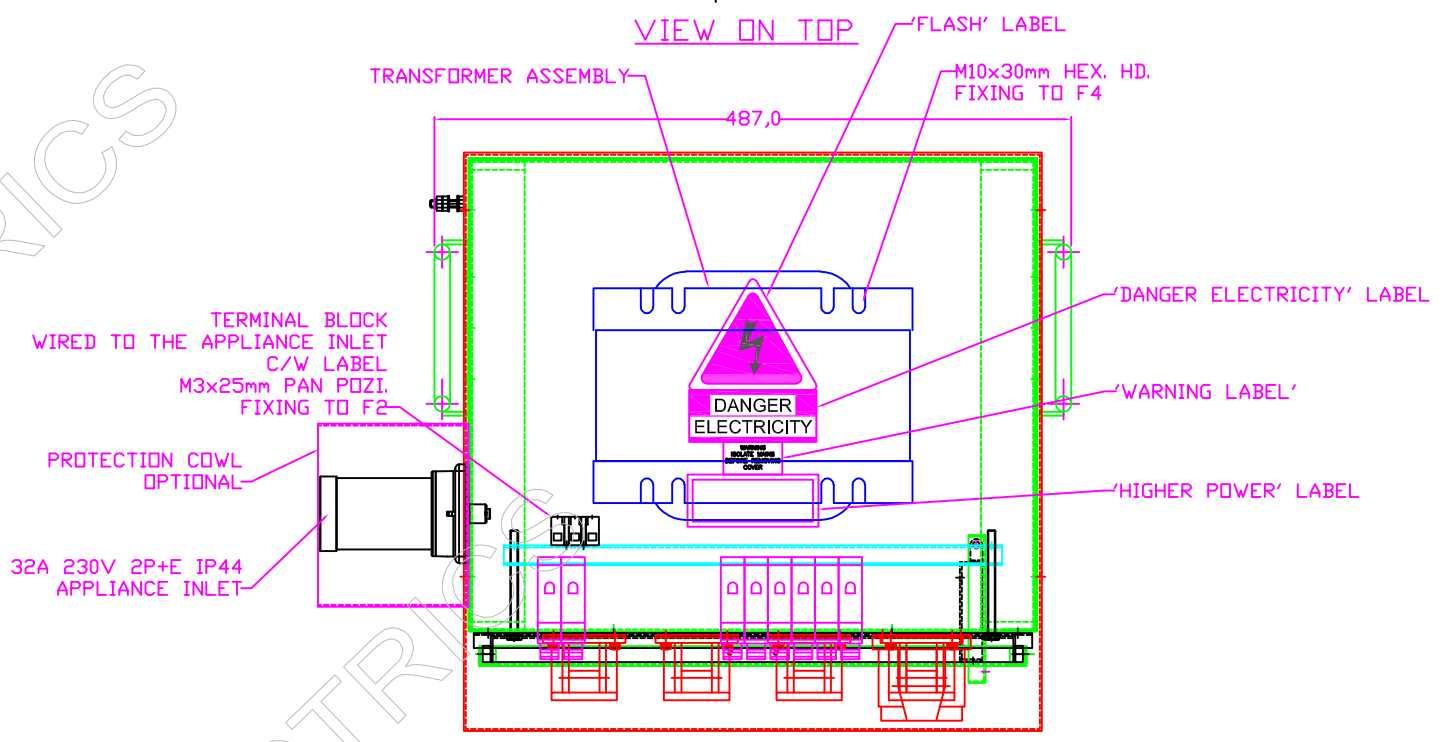


CUSTOMER INFORMATION COPY



NOTES:

1. WIRING CABLE, END TERMINALS, SLEEVES AND OTHER CONSUMABLES ALL AS REQUIRED.
2. USE PIN CONNECTOR TERMINALS FOR TRANSFORMER PRIMARY FLYING LEADS.
3. F4\* HANDLE FIXINGS WITHOUT SHAKEPROOF/SPRING WASHER AND TIGHTEN TO 30Nm OF TORQUE.
4. F1\* WASHER ON THIS FIXING TO BE 1/4" TABLE 3 LIGHT CODE S260066 & USE SPRING WASHERS.

THIS DRAWING IS THE PROPERTY AND COPYRIGHT OF BLAKLEY ELECTRICS AND MUST NOT, WITHOUT THEIR WRITTEN CONSENT, BE PASSED ON, COPIED, OR USED FOR ANY OTHER PURPOSE.

REV: A	B														
EDR: 6793	7378														
UNLESS OTHERWISE STATED:- ALL DIMENSIONS IN MM. TOLERANCES TO H30052 FIXING STANDARD TO H30051 WIRING STANDARD TO H20051 WELDING STANDARD TO QAI 61.										MATERIAL		SIZE			
DO NOT SCALE THIS DRAWING. IF IN DOUBT, ASK										REF. S210338		COPY ISSUED			
TITLE GENERAL ASSY. FOR TA/AI/P/1/5/S5										ORIGINAL SCALE 1:4		BLAKLEY ELECTRICS LIMITED			
										DATE 24.04.18		DRAWING No. B28145		REVISION B	
										DRN. B.W.					
										CHKD.					
										APPD.		SHEET 1 OF 1			