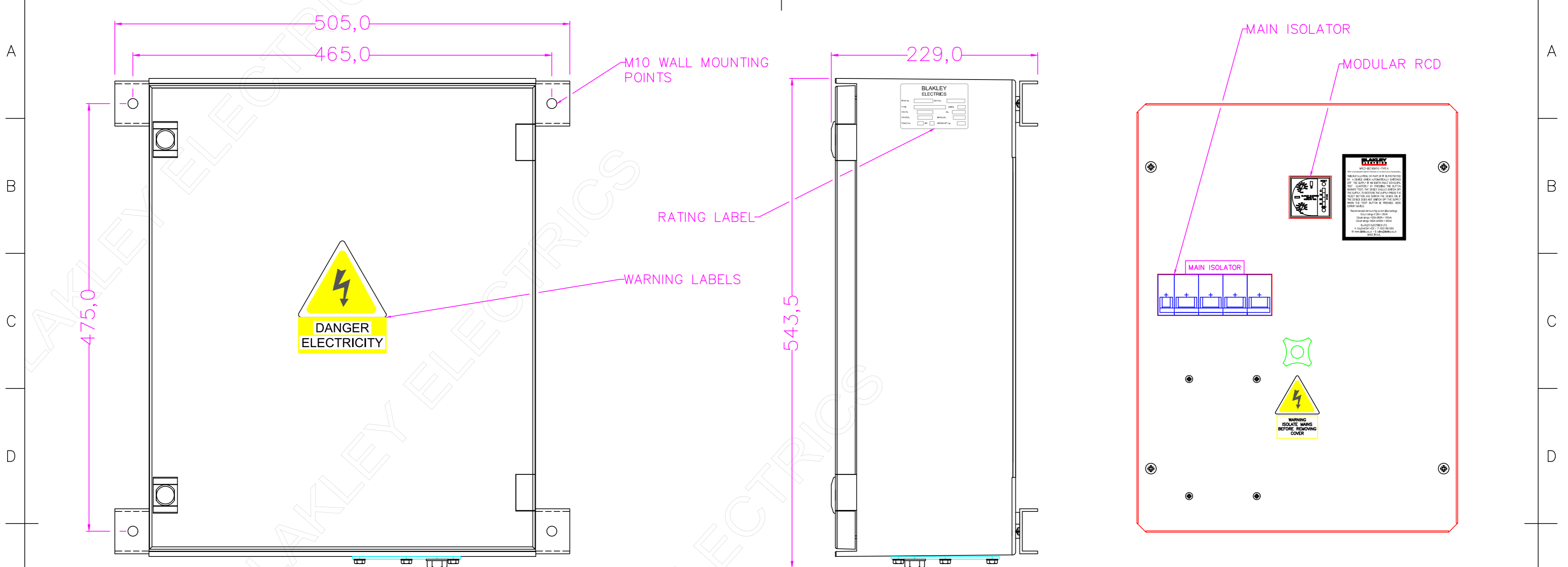


1 2 3 4 5 6 7 8 9 10 11 12



VIEW ON FRONT

VIEW ON R.H.S

VIEW ON INSET PLATE



VIEW ON UNDERSIDE

CUSTOMER INFORMATION COPY

NOTES:
 GRP ENCLOSURE
 INCOMER TERMINATION DISTANCE - 250mm
 INCOMER MAX CABLE ACCEPTANCE - 50mm RIGID OR 35mm FLEXIBLE
 IP RATING - IP55

THIS DRAWING IS THE PROPERTY AND COPYRIGHT OF BLAKLEY ELECTRICS AND MUST NOT, WITHOUT THEIR WRITTEN CONSENT, BE PASSED ON, COPIED, OR USED FOR ANY OTHER PURPOSE. THIS COPY IS UNCONTROLLED UNLESS OTHERWISE MARKED.

REV: A															
EDR: 8449															
UNLESS OTHERWISE STATED:- ALL DIMENSIONS IN MM. EWM REFERS TO ENGINEERING & WORKSHOP MANUAL TOLERANCES TO EWM SECTION 3.1.3 FIXING STD TO EWM APPENDIX D. WIRING STD EWM SECTION 4. WELDING STANDARD TO QAI 061.										MATERIAL		BASED ON			
DO NOT SCALE THIS DRAWING. IF IN DOUBT, ASK										REF. S010022R		COPY ISSUED 03 Feb 2023			
TITLE GENERAL ASSEMBLY ARC 100A										ORIGINAL SCALE 1:3		DATE 02/02/23			
										DRN. PR		DRAWING No. B32297			
										CHKD.		REVISION A			
										APPD. BWA					

1 2 3 4 5 6 7 8 9 10 11 12 A2